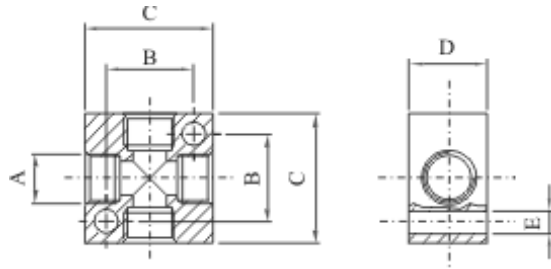


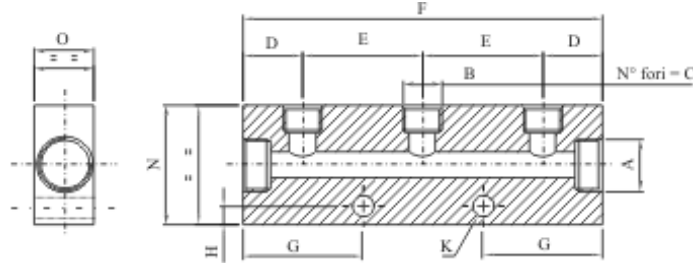
DISTRIBUIDORES DE ALUMINIO ROSCADOS

Posibilidad de referencias en aluminio Anodizado (bajo pedido y no todos los modelos), - AL -



RA: REGLETA ALUMINIO CRUZ 4 SALIDAS

	A	B	C	D	E
RA01	1/8"	17	25	15	4,25
RA02	1/4"	21	30	18	4,25
RA03	3/8"	30	40	20	5,25
RA04	1/2"	37	50	30	6,5



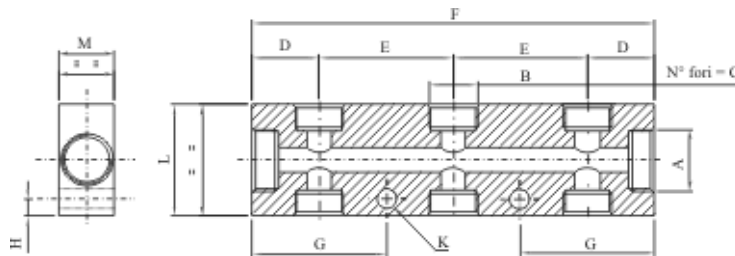
RAL: REGLETA ALUMINIO "L" SALIDAS A UN LADO

	A	C	B	D	E	F	G	N
RAL03M5	1/8"	3 - M5						
RAL04M5	1/8"	4 - M5						
RAL06M5	1/8"	6 - M5						
RAL0201	1/4"	2 - 1/8	15	30	60	30	30	
RAL0301	1/4"	3 - 1/8	15	30	90	30	30	
RAL0401	1/4"	4 - 1/8	15	30	120	30	30	
RAL0501	1/4"	5 - 1/8	15	30	150	30	30	
RAL0601	1/8"	6 - 1/8						
RAL0202	3/8"	2 - 1/4	18	36	72	36	40	
RAL0302	3/8"	3 - 1/4	18	36	108	36	40	
RAL0402	3/8"	4 - 1/4	18	36	144	36	40	
RAL0502	3/8"	5 - 1/4	18	36	180	36	40	
RAL0602	3/8"	6 - 1/4						

RAL: REGLETA ALUMINIO "L" SALIDAS A UN LADO

	A	C	B
RAL0202 (04)	1/2"	2 - 1/4	
RAL0302 (04)	1/2"	3 - 1/4	
RAL0402 (04)	1/2"	4 - 1/4	
RAL0502 (04)	1/2"	5 - 1/4	
RAL0602 (04)	1/2"	6 - 1/4	
RAL0203	1/2"	2 - 3/8	
RAL0303	1/2"	3 - 3/8	
RAL0403	1/2"	4 - 3/8	
RAL0503	1/2"	5 - 3/8	
RAL0603	1/2"	6 - 3/8	
RAL0204	1/2"	2 - 1/2	
RAL0304	1/2"	3 - 1/2	
RAL0404	1/2"	4 - 1/2	
RAL0504	1/2"	5 - 1/2	
RAL0604	1/2"	6 - 1/2	

Nota: Bajo pedido otras posibilidades a consultar



RAT: REGLETA AL.EN "T" SALIDAS AMBOS LADOS

	A	C	B	D	E	F	G	N
RAT04M5	1/8"	4 - M5						
RAT06M5	1/8"	6 - M5						
RAT10M5	1/8"	10 - M5						
RAT0401	1/4"	4 - 1/8	15	30	60	30	30	
RAT0601	1/4"	6 - 1/8	15	30	90	30	30	
RAT0801	1/4"	8 - 1/8	15	30	120	30	30	
RAT1001	1/4"	10 - 1/8	15	30	150	30	30	
RAT0402	3/8"	4 - 1/4	18	36	72	36	40	
RAT0602	3/8"	6 - 1/4	18	36	108	36	40	
RAT0802	3/8"	8 - 1/4	18	36	144	36	40	
RAT1002	3/8"	10 - 1/4	18	36	180	36	40	

RAT: REGLETA AL.EN "T" SALIDAS AMBOS LADOS

	A	C	B
RAT0603 (04)	1/2"	6 - 3/8	
RAT0803 (04)	1/2"	8 - 3/8	
RAT1003 (04)	1/2"	10 - 3/8	
RAT0604 (04)	1/2"	6 - 1/2	
RAT0804 (04)	1/2"	8 - 1/2	
RAT1004 (04)	1/2"	10 - 1/2	

Nota: Otras posibilidades de pasos/salidas a consultar